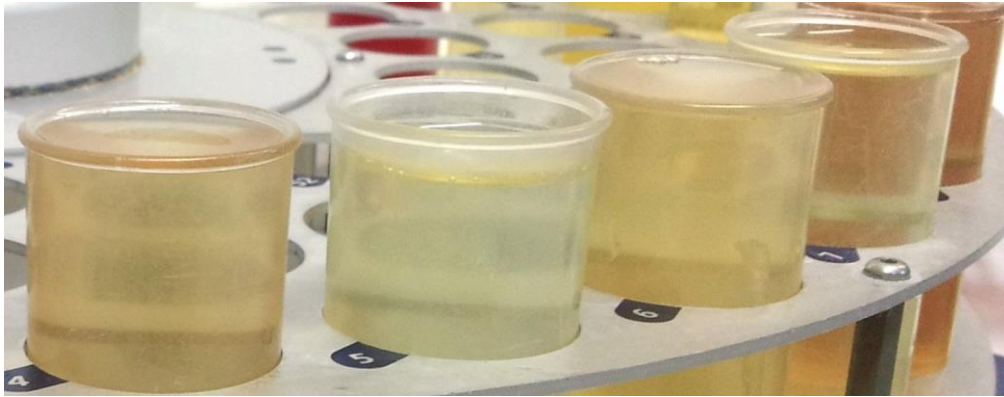


## HARVEST FEEDBACK 2019! #5

Results for Viognier, Sauvignon Blanc and Chenin Blanc



20 February 2019



---

In order to provide data that is beneficial to you as winemakers, only results for samples with **a balling of 22 and higher** are shown in the table below.

**Red and white juice results will be separated** so that you can focus on the cultivars that you are interested in!

---

Minimum, maximum and average values per cultivar and region according to their balling values:

Data collected between 8 - 14 February 2019												
Cultivar	Region		Balling	pH	TA	Malic	NOPA	NH4	YAN	Glucose	Fructose	Potassium
Viognier	Paarl	Max	27.71	3.40	6.51	3.20	246	84	330	151.02	157.38	746.46
		Min	22.76	3.31	6.16	2.79	250	75	325	112.56	113.20	1213.08
		Avg	24.53	3.51	5.81	2.52	254	67	322	121.14	125.97	1606.73
	Stellenbosch	Max	25.51	3.59	5.80	3.15	213	54	267	125.50	125.96	1957.03
		Min	22.25	3.25	6.46	1.24	216	78	294	99.61	103.43	1364.94
		Avg	23.38	3.43	5.79	2.41	235	67	302	110.51	116.60	1500.18
Sauvignon Blanc	Darling	Max	25.69	3.35	7.08	2.15	335	92	427	129.02	120.78	1824.14
		Min	21.95	3.07	9.61	3.32	159	94	253	109.10	97.19	1769.01
		Avg	24.32	3.34	8.04	3.39	311	92	403	127.80	114.65	1774.98
	Elgin	Max	25.48	3.24	6.53	2.09	128	116	244	124.75	122.87	1869.38
		Min	22.07	2.87	12.84	4.72	125	90	215	112.78	97.78	1294.19
		Avg	23.19	3.11	8.75	2.90	167	77	243	113.52	108.00	1545.44
	Franschhoek	Max	24.86	3.39	6.12	1.77	231	86	317	126.16	124.11	2471.15
		Min	22.13	3.33	6.12	2.73	150	46	196	116.70	101.16	1603.35
		Avg	23.25	3.32	6.61	2.23	181	66	247	120.31	111.78	1759.10
	Stellenbosch	Max	24.93	3.32	6.13	1.94	188	60	248	141.05	122.67	1279.09
		Min	22.01	3.21	8.49	3.34	172	73	245	115.14	100.79	1823.44
		Avg	23.00	3.31	7.27	2.98	179	62	241	124.01	109.38	1618.68
Chenin Blanc	Paarl	Max	24.89	3.53	5.64	3.72	231	54	285	148.47	126.45	1458.97
		Min	22.38	3.30	7.38	3.26	196	74	270	116.93	108.89	1669.18
		Avg	23.55	3.46	6.30	3.08	208	58	266	124.04	115.08	1674.61
	Stellenbosch	Max	25.38	3.44	7.10	3.11	145	27	172	133.03	125.97	1724.72
		Min	22.01	3.36	6.17	2.31	181	47	228	106.02	103.53	1494.03
		Avg	23.06	3.37	6.48	2.81	167	42	209	116.50	109.70	1460.38
	Swartland	Max	25.32	3.37	5.75	1.35	202	79	281	135.72	127.75	1533.84
		Min	22.24	3.47	7.10	4.48	178	39	217	115.75	102.71	1637.84
		Avg	23.81	3.51	5.46	2.54	207	63	270	128.42	118.99	1496.50

Feedback on **Red Juices** will follow soon!



---

Log your samples online: <https://client.vinlab.com/>

***Goodluck with Harvest Season 2019!***

Regards  
The Vinlab Team

